

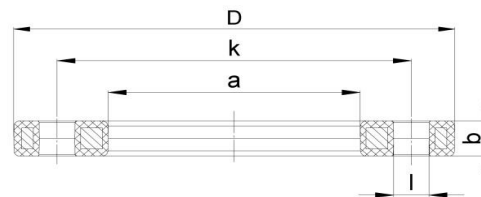
## BACKING FLANGE, PP STEEL METRIC

03 Update - 05/2022

### TECHNICAL DATA

### INJECTION MOULDED

Article No	001 515 7120 0560
d (mm)	560
DN (mm)	600
D (mm)	799
a (mm)	618
k (mm)	725
b (mm)	50
l (mm)	30
Weight (Kg)	49,500
Box Quantity (pcs)	1
Box Dimension (pcs)	80,4x80,4x6,5



### IDENTIFICATION OF PRODUCT

### SPECIFICATION

D(mm)	560
BOLT CIRCLE	PN 10
RAW METARIAL	PP %30 Glass-fibre

NUMBER OF HOLES	20
BOLT	M 27
TIGHTENING TORQUE (Nm)	170

Reinforced with steel ring  
UV-Resistant suitable for outdoor use

TRADEMARK	NTG
EXECUTION	Injection Moulded
PRESSURE CLASS	10 Bar
STANDARD	ISO 7005 EN 1092 BS 4504 DIN 2501

*Tolerance on diameters and thickness according to the standards. The other dimensions are specialized. Tolerance  $\pm 5\%$ . NTG PLASTIK reserves all the right to change any information without giving prior notice. The production, distribution and utilization of this document without explicit authorization is prohibited.*